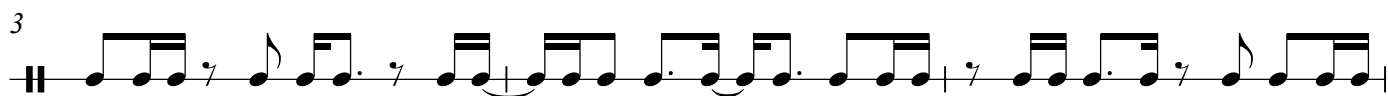


Simple Meters: Quadruple Beat Division



Quadruple Division Beat = ♩

The image displays ten staves of musical notation, numbered 1 through 10, arranged vertically. Each staff begins with a treble clef and a 3/2 time signature. The notation is written in black ink on a white background. The music consists of eighth and sixteenth notes, often beamed together, and rests. Some notes have stems pointing upwards, while others point downwards. The notation is a single melodic line, likely for a vocal or instrumental part. The staves are separated by small gaps, and the numbers 1 through 10 are placed to the left of each staff.

Compound Meters

