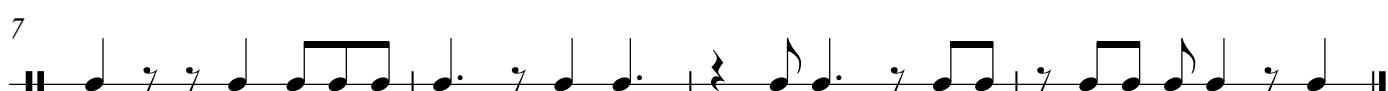
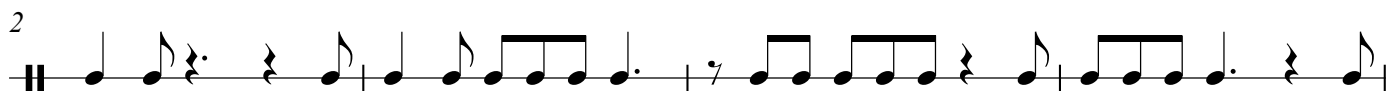


# Chapter 4 Supplemental Rhythm Reading

## Compound Triple

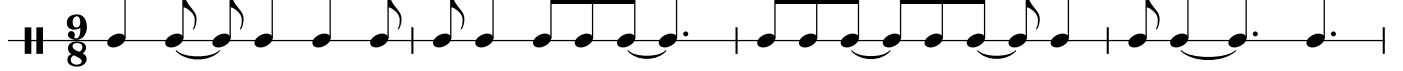
Adding rests:



Using ties:



11



12



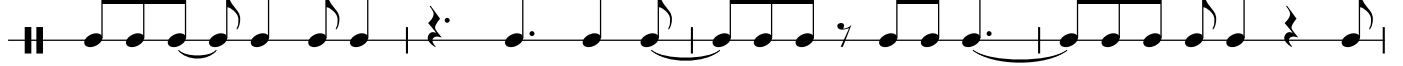
13



14



15 Putting it all together:



16



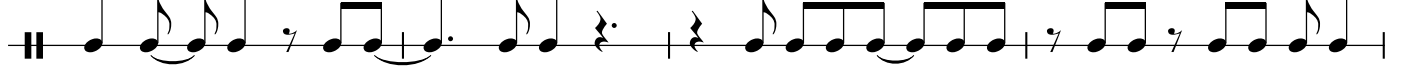
17



18



19



20




# Compound Quadruple

Adding rests:

The first staff of music is in 12/8 time, indicated by a double bar line with a '12' above and an '8' below. The key signature has one flat (B-flat). The melody begins with a half note G4, followed by a quarter rest, a quarter note A4, a quarter note Bb4, and a quarter note C5. This is followed by a half note Bb4, a half note A4, and a half note G4. The staff continues with a half note F4, a half note E4, and a half note D4. The notation includes various rests and note values consistent with the 12/8 time signature.

[illegible]

3



The third exercise is a single line of music on a five-line staff. It begins with a double bar line and a repeat sign. The notation consists of eighth and sixteenth notes, some with flags, and various rests (quarter, eighth, and sixteenth). The piece concludes with a final double bar line.

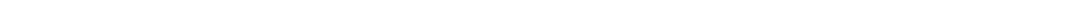
[illegible]

5

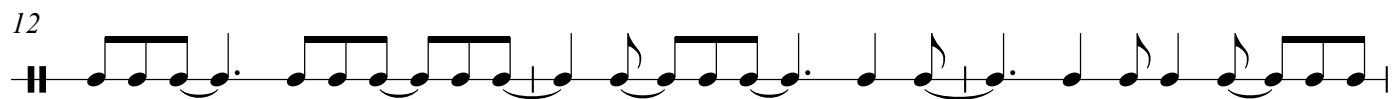
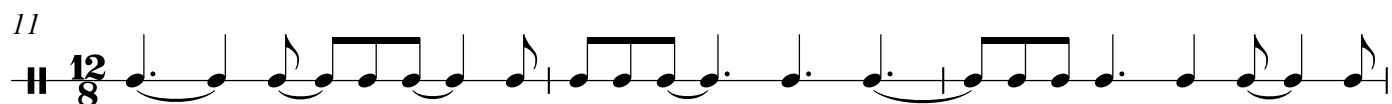
[illegible]

Using ties:

[illegible][illegible]

9 

10



Putting it all together:

