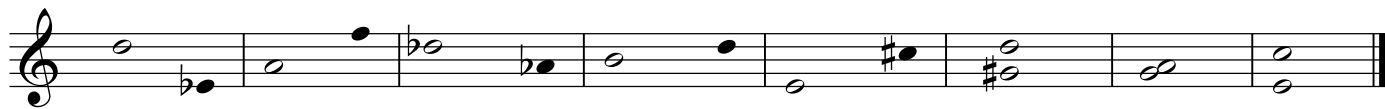


ASSIGNMENT NO. 9

1. Interval identification: all intervals to P8 (2x each).



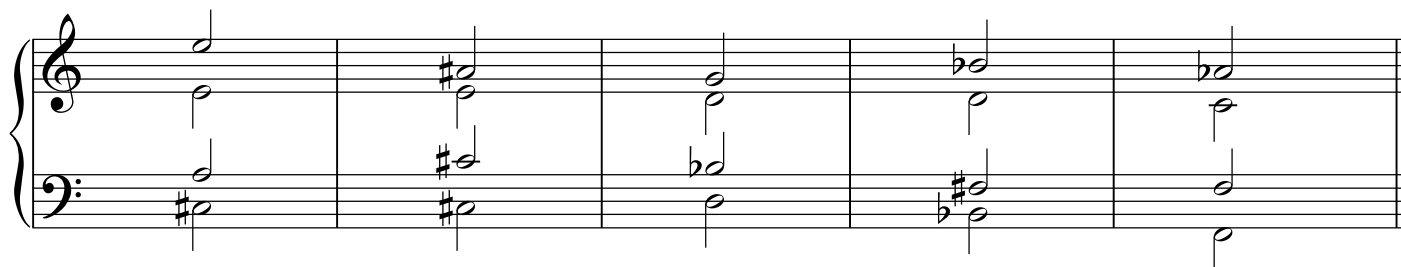
a) +7 b) -6 c) P4 d) -3 e) +6 f) TT g) +2 h) -6

2. Longer series of melodic simple intervals (3x each).



a) +3 P4 -3 b) +6 +2 -3

3. Triad identification: identify quality, soprano factor and bass factor (all triads)
NB: augmented triad = **assume root position** (3x each).



	<i>a)</i>	<i>b)</i>	<i>c)</i>	<i>d)</i>	<i>e)</i>
Quality:	+	d	-	A	-
Soprano:	5	r	r	r	3
Inversion:	3 ($\frac{6}{3}$)	3 ($\frac{6}{3}$)	5 ($\frac{6}{4}$)	r ($\frac{5}{3}$)	r ($\frac{5}{3}$)

4. Scales: identify by name (2x each, ascending or descending).

a) - harmonic b) Lydian c) Mixolydian



5. Melodic dictation (4x).



E♭ major

continued verso...

6. Two-part melodic dictation (5x).

B minor

7. Harmonic dictation: give bass line (scale degrees) and chord analysis (Roman numerals).

All chords as before; add cadential 6/4 (3x).

Bass line: 3 4 5 5 1
 F#: I⁶ ii⁶ V $\begin{matrix} 8 & 7 \\ 6 & 5 \\ 4 & 3 \end{matrix}$ I

Bass line: 5 5 3 2 1
 c: V $\begin{matrix} 6 & 5 \\ 4 & 3 \end{matrix}$ i⁶ vii^{o6} i

8. Rhythmic dictation (notate without rests) (4x).

9. Rhythmic dictation (4x).