

# ASSIGNMENT NO. 8

1. Interval identification: all intervals to P8 (2x each).



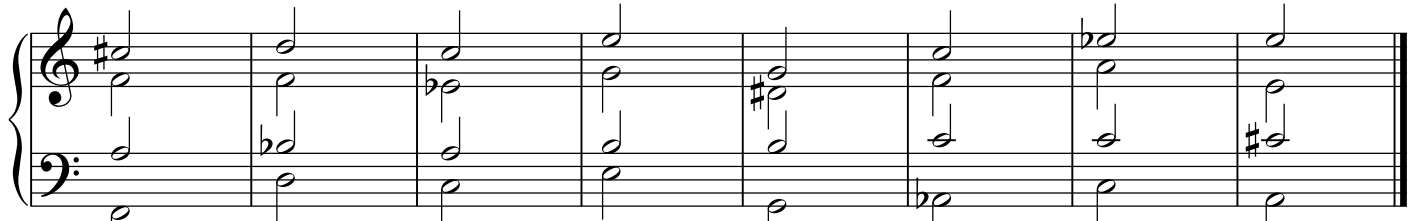
a) -3      b) -7      c) -6      d) +7      e) +3      f) P5      g) +7      h) TT

2. Harmonic intervals in series (3x each).



a) -3      -3      b) TT      +3      c) -6      P5

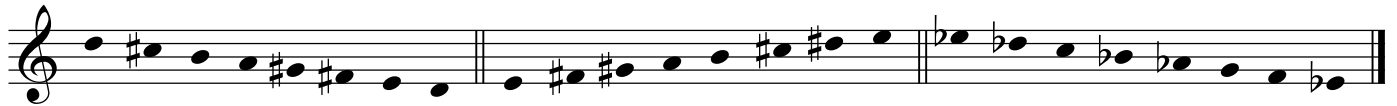
3. Triad quality identification, minor, major, augmented or diminished (2x each).



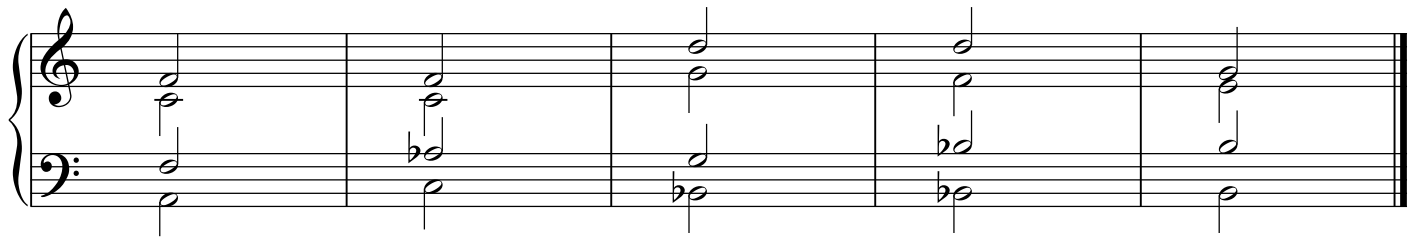
a) A      b) +      c) d      d) -      e) A      f) -      g) d      h) +

4. Scales: identify as major, Lydian or Mixolydian (2x each, ascending or descending).

a) Lydian      b) major      c) Mixolydian



5. Soprano/bass factors: +/- or diminished as r, 3 or 5. Chords in any position (3x each).



Soprano: a) r      b) r      c) 5      d) 3      e) 3

Bass: a) 3 ( $\frac{6}{3}$ )      b) 5 ( $\frac{6}{4}$ )      c) 3 ( $\frac{6}{3}$ )      d) r ( $\frac{5}{3}$ )      e) 5 ( $\frac{6}{4}$ )

6. Melodic dictation (4x).



D mixolydian

*continued verso...*

7. Melodic dictation (4x).

A major

8. Harmonic dictation: give bass line (scale degrees) and chord analysis (Roman numerals).  
All chords as before; **add neighbouring 6/4** (3x).

Bass line: 1 1 1 2 7  
D: I  $\frac{5}{3}$   $\frac{6}{4}$   $\frac{5}{3}$  ii V<sup>6</sup>

Bass line: 1 4 5 5 5  
g: i ii<sup>o</sup>6 V  $\frac{5}{3}$   $\frac{6}{4}$   $\frac{5}{3}$

9. Rhythmic dictation (4x).

10. Rhythmic dictation (4x).