

ASSIGNMENT NO. 6

1. Interval identification: all intervals to P8 (2x each).

A single musical staff in treble clef containing eight intervals. The intervals are: a) a major sixth, b) a perfect fifth, c) a major seventh, d) a perfect fourth, e) a minor second, f) a minor sixth, g) a minor seventh, and h) an octave.

- a) +6 b) P5 c) +7 d) P4 e) -2 f) -6 g) -7 h) TT

2. Triad quality identification, minor, major or **diminished** (2x each).

A musical staff in treble clef containing eight triads. The triads are: a) major, b) diminished, c) minor, d) diminished, e) minor, f) diminished, g) major, and h) major.

- a) + b) d c) - d) d e) - f) d g) d h) +

3. Scales: identify as major or Lydian (2x each, ascending or descending).

- a) Lydian b) major c) Lydian d) Lydian e) major

Two musical staves in treble clef containing five scales. The first staff has three scales: a) Lydian (ascending), b) major (ascending), and c) Lydian (ascending). The second staff has two scales: d) Lydian (descending) and e) major (descending).

4. Soprano factors: +/- only, identify as r, 3 or 5. All chords in root position (3x each).

A musical staff in treble clef containing six chords in root position. The chords are: a) major triad, b) major triad, c) minor triad, d) major triad, e) major triad, and f) major triad.

- a) 3 b) 5 c) r d) r e) 5 f) 3

5. Bass factors: +/- only, identify by inversion symbol or chord member (r, 3, 5) (3x each).

A musical staff in bass clef containing six chords. The chords are: a) major triad, b) major triad, c) major triad, d) major triad, e) major triad, and f) major triad.

- a) 5 ($\frac{6}{4}$) b) r ($\frac{5}{3}$) c) 3 ($\frac{6}{3}$) d) 5 ($\frac{6}{4}$) e) r ($\frac{5}{3}$) f) 3 ($\frac{6}{3}$)

continued verso...

6. Melodic dictation (4x).



F major

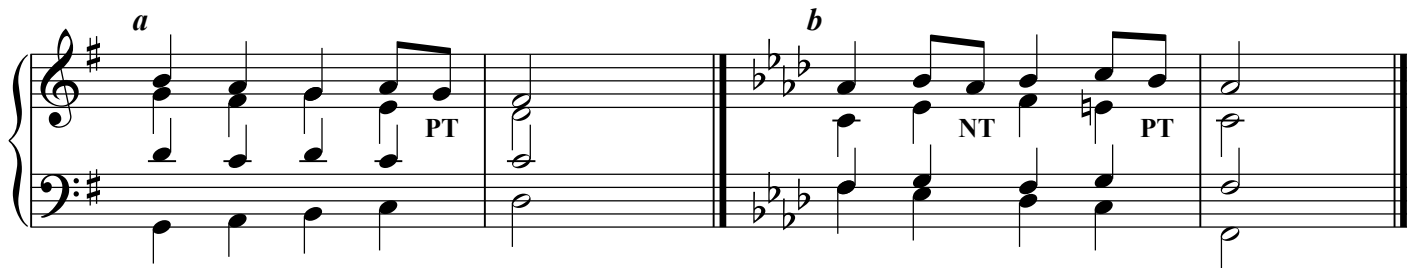
7. Melodic dictation (4x).



A minor

8. Harmonic dictation: give bass line (scale degrees) and chord analysis (Roman numerals) (3x).
May include passing or neighbouring tones. Chords include:

I, I6, ii, ii6, IV, IV6, V, V6, V7, vi, and vii°6 in major keys;
i, i6, ii°6, iv, iv6 (IV6), V, V6 (v6), V7, VI, VII and vii°6 in minor keys.



Bass line: 1 2 3 4 5
G: I vii°6 I6 ii6 V7

Bass line: 1 7 6 5 1
f: i VII iv6 V i

9. Rhythmic dictation (4x).



10. Rhythmic dictation (4x).

