

ASSIGNMENT 12

1. Interval identification: all simple intervals; **add +/-9** (2x each).



- a) +9 b) P4 c) +9 d) -3 e) -9 f) +2 g) P8 h) -9

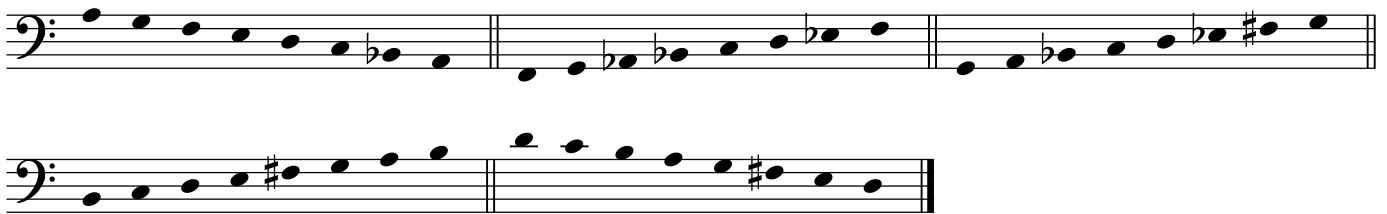
2. Series of simple harmonic intervals (2x each).



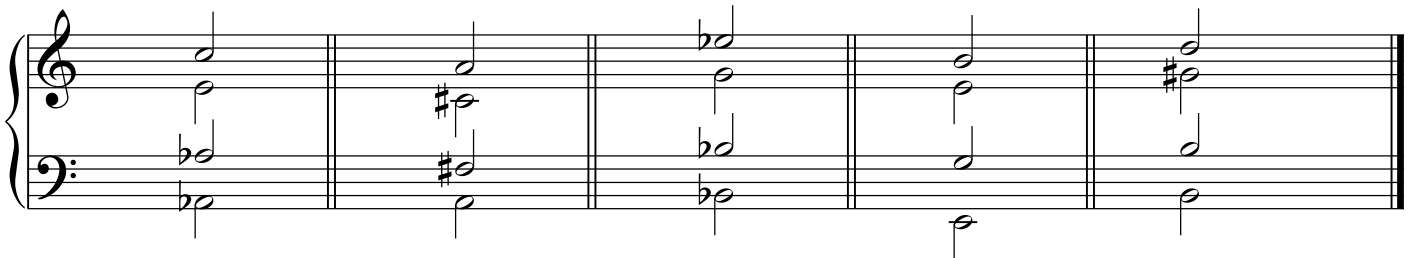
- a) +2 -3 b) -7 +3 c) P5 P4

3. Scales: all scales as before. **Add Phrygian** (2x each, ascending or descending).

- a) Phrygian b) Dorian c) -harmonic d) Phrygian e) Mixolydian



4. Triad identification: quality, soprano factor, bass factor. Minor, major, augmented or diminished triads (3x each).



	a)	b)	c)	d)	e)
Quality:	A	-	+	-	d
Soprano:	3	3	r	5	5
Bass:	r (5)	3 (6)	5 (4)	r (5)	3 (6)

5. Melodic dictation (6x).



F minor

continued verso...

6. Two-part melodic dictation (6x).

E major

7. Longer harmonic dictation: give bass **and soprano** (scale degrees) and chord analysis (*i.e.*, Roman numerals). Includes all regular diatonic chords (root position and first inversion) as well as passing, neighbouring and cadential 6/4 chords. **Includes V4/2 and other unaccented NHTs** (5x).

Sop. line: 5 4 3 2 5 4 5 3 2 1 1
 Bass line: 1 2 3 4 3 4 5 5 1
 F: I vii^o 6 I⁶ V⁴/₂ I⁶ ii⁶ V⁸/₆ ⁷/₅ I

8. One-part rhythmic dictation (5x).

9. Two-part rhythmic dictation (5x).