

ASSIGNMENT 11

1. Interval identification, all intervals to P8 (2x each).



a) +3 b) TT c) +7 d) -6 e) -2 f) +6 g) P4 h) -7

2. Series of simple harmonic intervals (2x each).



a) -6 +3 b) P8 P5 c) P4 -3

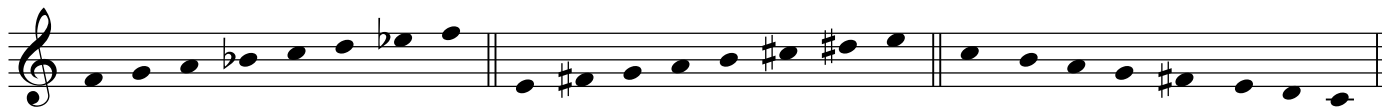
3. Triad identification: quality, soprano factor, bass factor. Minor, major, augmented or diminished triads (3x each).



	<i>a)</i>	<i>b)</i>	<i>c)</i>	<i>d)</i>	<i>e)</i>
Quality:	d	-	A	-	+
Soprano:	r	3	r	5	3
Bass:	3 (6/3)	r (5/3)	r (5/3)	3 (6/3)	5 (6/4)

4. Scales: identify as major, minor (all forms, including jazz melodic), Lydian, Mixolydian or Dorian (2x each, ascending or descending).

a) Mixolydian b) - melodic c) Lydian d) Dorian e) major



continued verso...

5. Melodic dictation (6x).

6. Harmonic dictation: give bass **and soprano** (scale degrees) and chord analysis (*i.e.*, Roman numerals). Includes all regular diatonic chords (root position and first inversion) as well as passing, neighbouring and cadential 6/4 chords. **Add V6/5** (3x).

Sop. line: 3	2	1	2	3	4	Sop. line: 3	4	5	4	3	4	3
Bass line: 1	2	3	1	7		Bass line: 1	6	5	5	1	7	1
G: I	vii°6	I6	I	V ⁶ ₅		f: i	iv ⁶	V ⁸ ₆	V ⁷ ₅	i	V ⁶ ₅	i

7. Rhythmic dictation (4x).

8. Rhythmic dictation (4x).